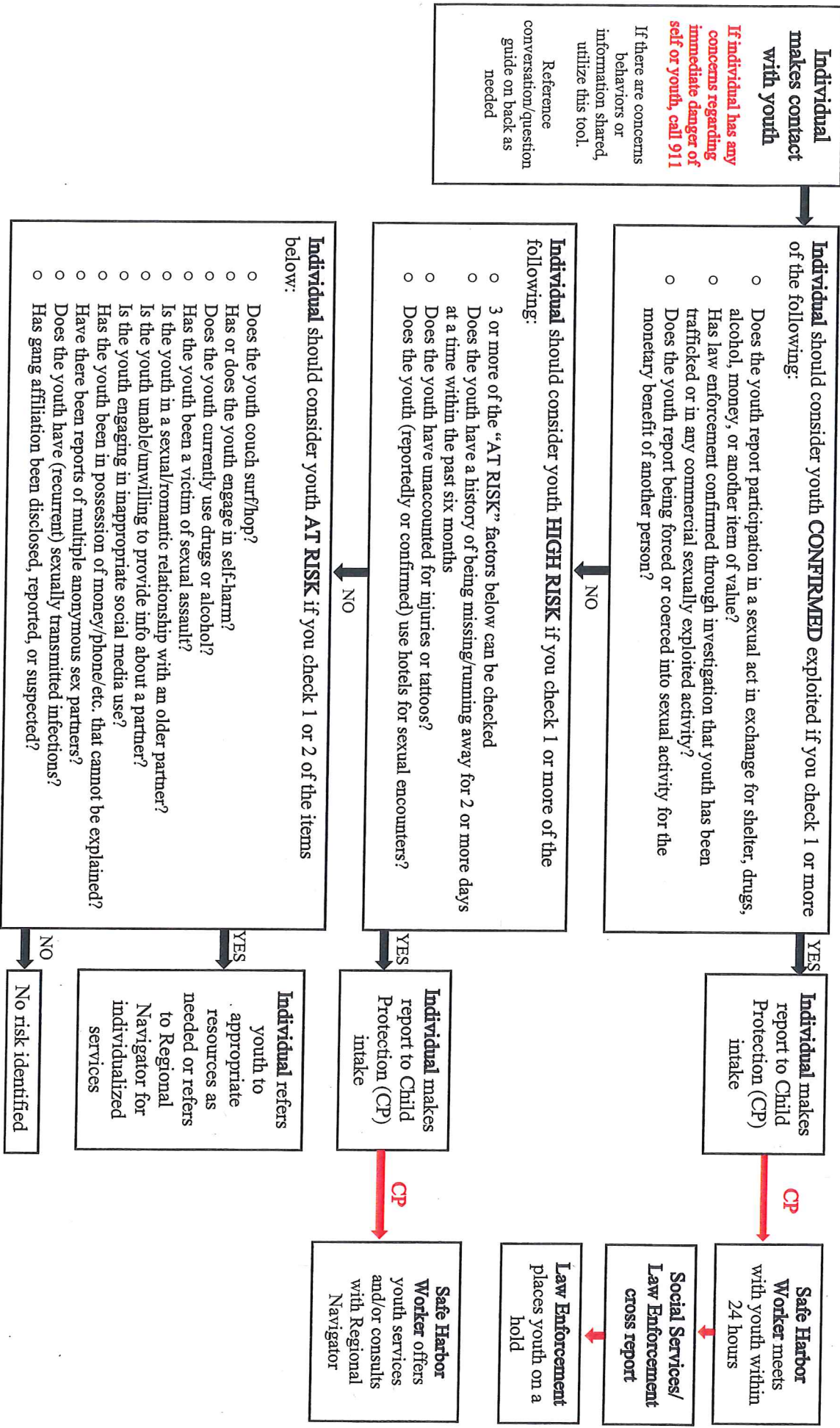


# Wright County Determination and Action Chart for Sexually Exploited Youth



## CONTACT INFORMATION for WRIGHT COUNTY

Child Protection Intake: 763-682-7449  
 Law Enforcement: 911 or 763-682-7600

Regional Navigator (LSS): 218-821-0943  
 Lutheran Social Services Crisis Line: 866-824-3770

Wright County Safe Harbor Task Force Members at WCHHS: Ali Tesmer, Jessica Nelson, Abby Wacker, Jenna Johnson, Jacob Anson

## Wright County Determination and Action Chart Question Guide

- Where are you living?
- Have you ever intentionally hurt yourself or been hurt by someone else?
- Have you used drugs or alcohol in the past year? (kids often use drugs or drink alcohol, different kids use different drugs)
- If you've engaged in sex or sexual behaviors, has it always been your choice? Tell me more. Have you ever had or been tested for a sexually transmitted infection?
- Are you currently dating, talking to, or sexually active with someone? How old are they?
- Has anyone asked you to do anything that makes you feel uncomfortable through social media?
- How do you get your money? Tell me more.
- Have you ever traded sex for things of value for yourself or someone else? (money, drugs, housing, gifts)
- Are you worried about yours or anyone else's safety?